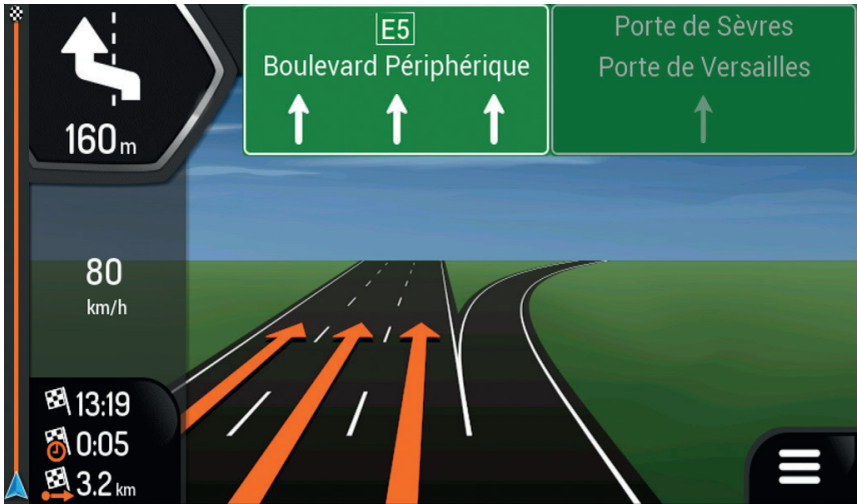


V1.0

MAP UPDATE
INSTRUCTIONS



CAR MEDIA SYSTEMS



SMART NAVICEIVER
MOBILE INTERNET READY
VISION ANDROID™ SERIES

IMPORTANT NOTE

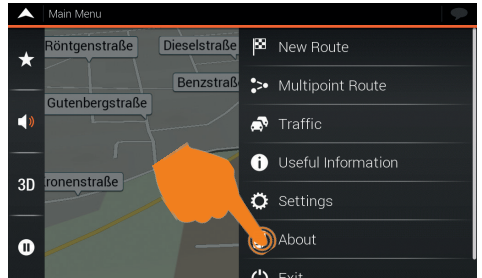
These instructions describe how to perform a map update on ESX Naviceivers with Android operating system and pre-installed navigation software.

If you would like to update navigation software that is installed on an SD card, please only pay attention to pages 3 and 5 to 9 of these instructions. The different procedures are described accordingly.

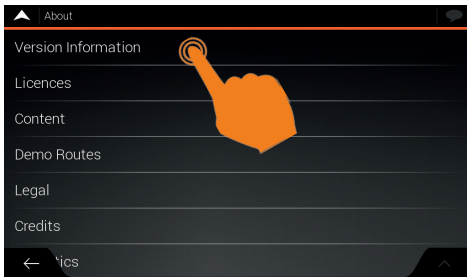
Start the navigation software on your device.



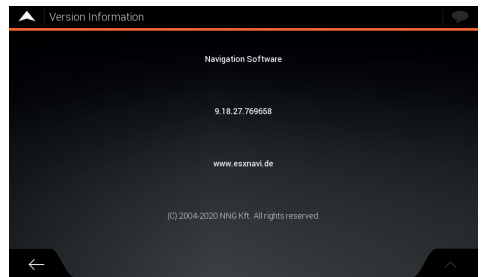
In the main view, open the settings at the bottom right.



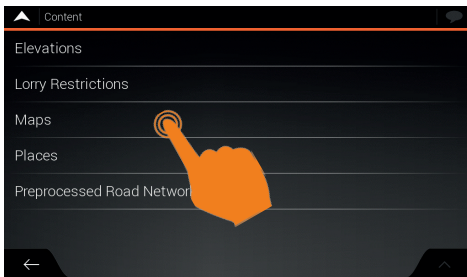
Then tap on "About".



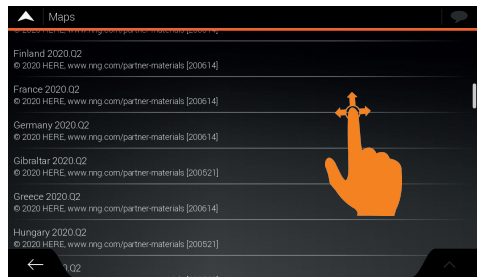
Here tap on "Version information" or "Content".



Here you can see the version number of the software. The years listed there only represent the development of the software and not the status of the map material.



Under Contents, tap on "Maps".



Here you will find information on the status of the map material for the respective country.

MAP UPDATE

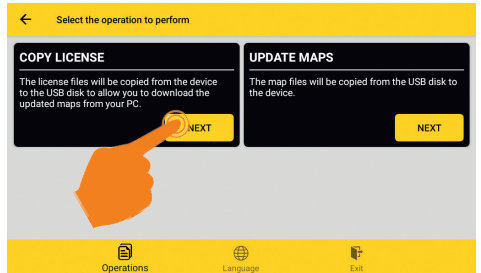
The following instructions describe how to carry out a map update with the navigation software pre-installed on the internal hard drive. If you want to update navigation software that is installed on an SD card, please only observe pages 22 to 25 of these instructions. The different procedures are described accordingly.

Copy the license information to a USB stick.

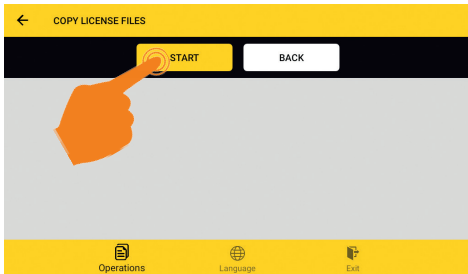
You need a compatible USB stick and a Windows PC or laptop with an Internet connection. Unfortunately, an update via macOS is currently not possible.



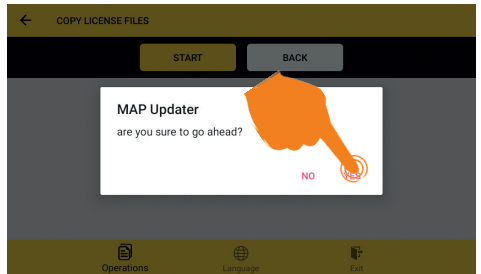
Start the “Map Updater” app. Then connect a USB stick to the ESX device.



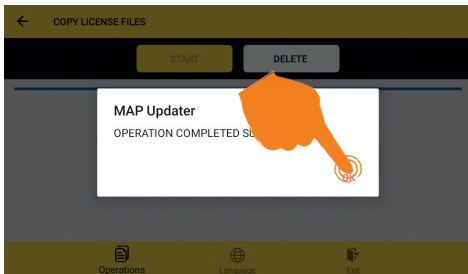
Tap on “NEXT” under “COPY LICENSE”.



Tap on „START“.

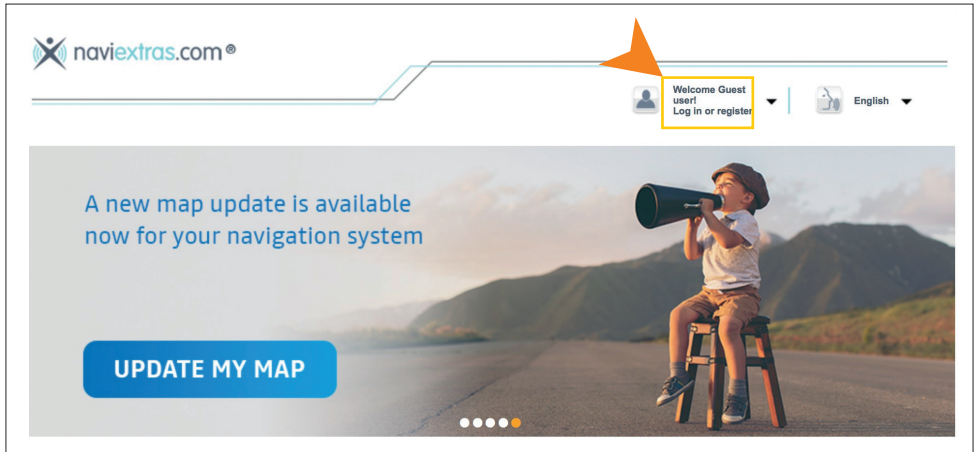


Confirm with “YES”. The required files are then copied to the USB stick.

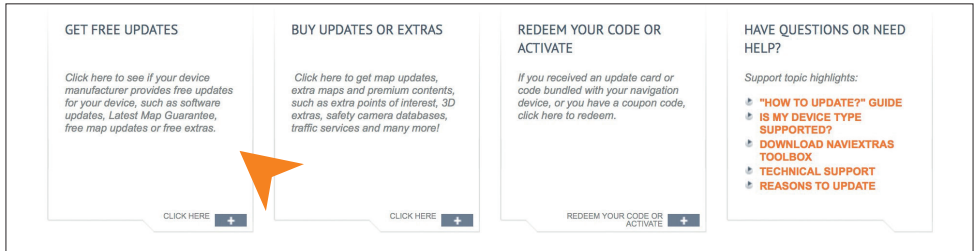


Tap on “OK” and then remove the USB stick and connect it to the Windows PC.

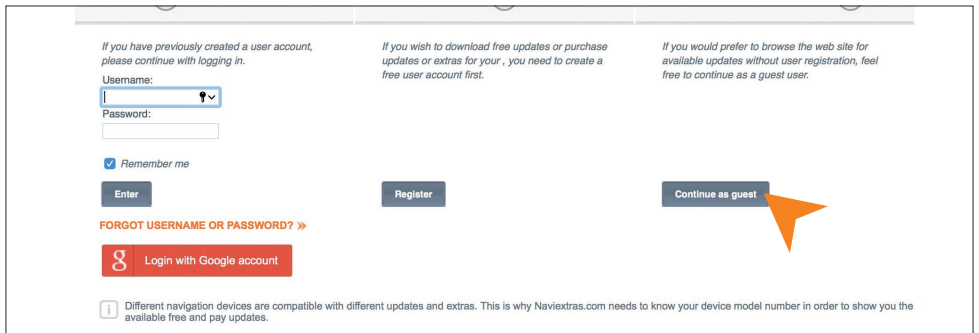
Go to the site www.naviextras.com on the Internet.



Register there and create a user account. Alternatively, you can simply select the “Guest user” access without registering. To do this, click on “GET FREE UPDATES” at the bottom left and then on the right on the next page on “Continue as guest”.



To do this, click on “GET FREE UPDATES” at the bottom left and then on the right on the next page on “Continue as guest”.



Select "ESX Car Media Systems" from the list.

▼ ESX Car Media Systems

▶ VNC x / VN x09 / VN x10 / VN x11 / VN x20 / VN x30 / VN x35 series

AUSWÄHLEN »

Alternatively, you can also enter "ESX" in the search mask.

DEVICE SELECTION

Please choose a device for which you would like to purchase updates and extras

« GO BACK

Please type the brand name of your device

ESX

▶ ESX Car Media Systems

Then click on "Maps & More" on the left or on "CONTINUE" on the right.

naviextras.com®

Welcome Guest user! Log in or register

English

UPDATES AND EXTRAS FOR YOUR

ESX CAR MEDIA SYSTEMS MORE DEVICES

VNC X / VN X09 / VN X10 / VN X11 / VN X20 / VN X30 / VN X35 SERIES DETAILS

You have successfully selected your device!

Your selected device is always visible in the top-left corner. Please note, that all your purchase will be bound to it!

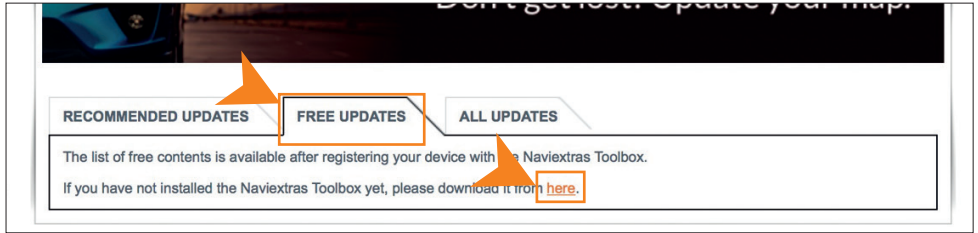
Your selected device will be shown here

Maps & More

CONTINUE »

Download the „Naviextras Toolbox“ software.

Click in the middle on “FREE UPDATES” and then on “here”.



Then click on “DOWNLOAD” below on the right. Naviextras Toolbox is a Windows utility that you can use to install updates and new content on your ESX Naviceiver.

Supported operating systems: Windows 7, Windows 8, Windows 10

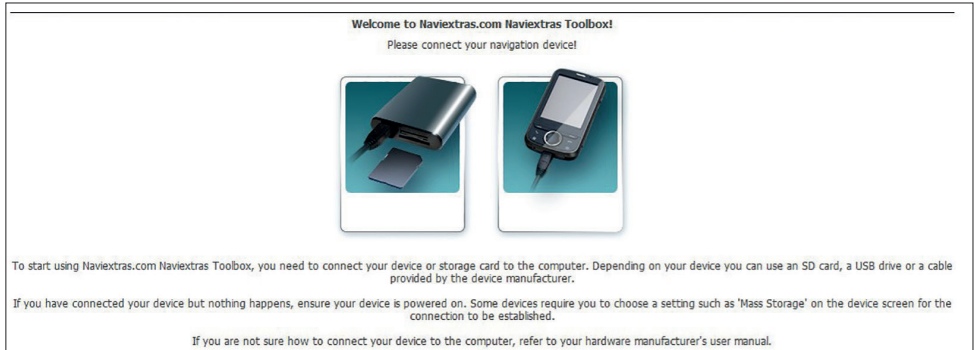


Note for the pre-installed navigation software: Connect the USB with the license information to your computer. After a successful connection, the program checks the content of the USB stick.

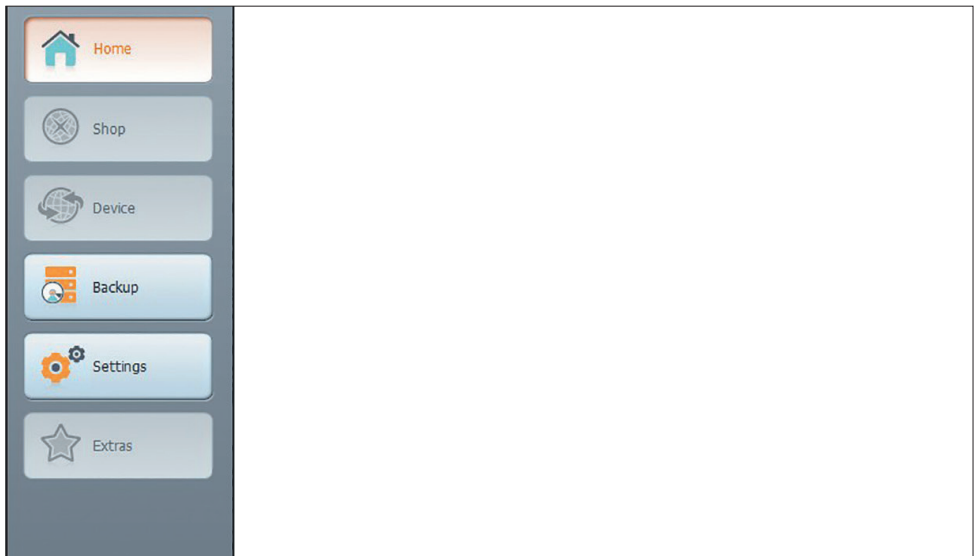
Note for the navigation software on SD card: Connect a microSD card reader to your computer and insert the microSD card from your naviceiver there. After a successful connection, the program checks the content of the SD card.

Install and start the software “Naviextras Toolbox”.

Open the installation file “Naviextras_Toolbox_Setup.exe” and on your computer and follow the installation instructions. Start the program after successful installation.



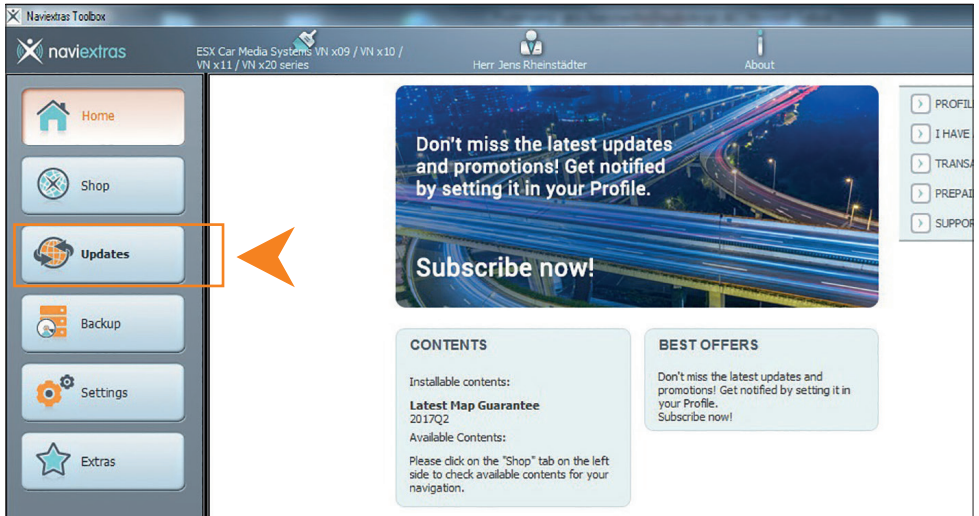
Then open the installation file “Naviextras_Toolbox_Setup.exe” on your computer and follow the installation instructions. Then start the program after successful installation.



Note for the pre-installed navigation software: Connect the USB with the license information to your computer. After a successful connection, the program checks the contents of the USB stick.

Note for the navigation software on SD card: Connect a MicroSD card reader to your computer and insert the MicroSD card from your Naviceiver there. After a successful connection, the program checks the contents of the SD card.

Perform the map update.



If an update is available for your map material, the “Updates” button will appear in the left menu bar. Click Updates to complete the process. The update is approx. 4-5 gigabytes in size and, depending on your internet connection, this process can take some time.

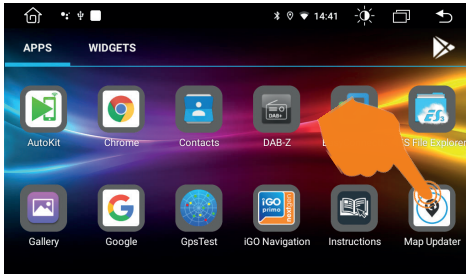
If you have an extended navigation software license (can be updated for 1 year or 3 years), you can repeat the update process from time to time to bring the map material of your navigation software up to date. Depending on your needs, you can buy additional extras and extensions with the “**Naviextras Toolbox**” software.

MAP UPDATE

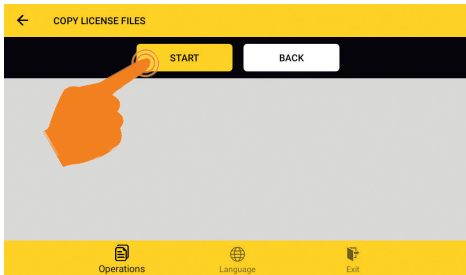
Note for the navigation software on SD card: After the map update has been carried out successfully, exit the program and reinsert the SD card into your ESX Naviceiver. The map update is now complete.

Note for the pre-installed navigation software: After the map update has been carried out successfully, exit the program and reinsert the USB stick into your ESX Naviceiver and continue with the update as follows.

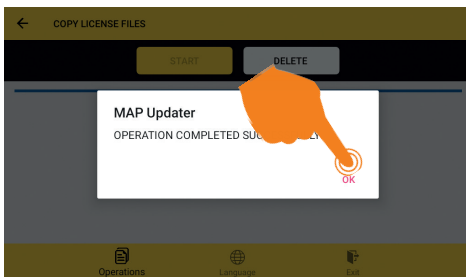
Install the map update on your ESX Naviceiver.



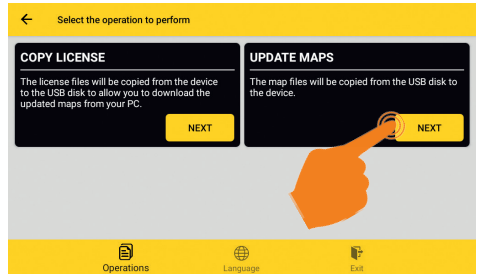
Start the “Map Updater” app after you have connected the USB stick.



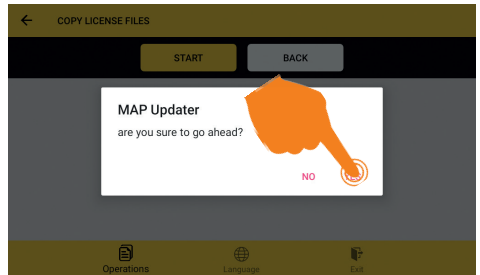
Tap on „START“.



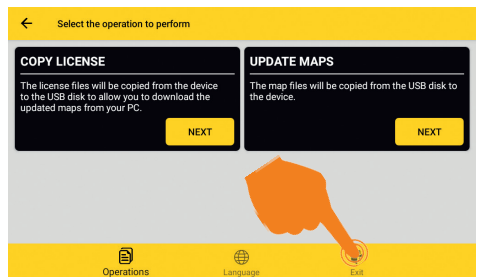
The process then takes about 6 minutes and must not be interrupted. Then tap on “OK”.



Tap on “NEXT” under “UPDATE MAPS”.

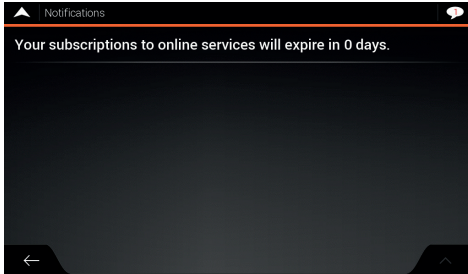


Confirm with “YES”. The map update is then copied to the ESX device.

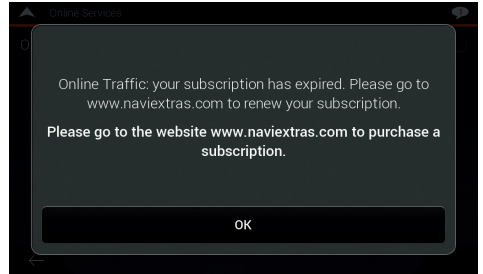


You can now close the app by tapping “Exit” in the lower right corner. Then confirm again with “Exit”.

Renew your Live Traffic subscription.



The duration of the Live Traffic function depends on the software license you have purchased. If your subscription has expired, you can renew it for a fee.



To do this, visit **naviextras.com**. To do this, follow the instructions on page 21 or use the "**Naviextras Toolbox**" software.



CAR MEDIA SYSTEMS



ESX Car Media Systems · Audio Design GmbH
Am Breilingsweg 3 · D-76709 Kronau/Germany
Tel. +49 7253 - 9465-0 · Fax +49 7253 - 946510
www.esxnavi.de - www.audiodesign.de

© Alle Rechte vorbehalten. Technische Änderungen und Fehler vorbehalten.