

V1.0

**INSTALLATION
GUIDE**

**INCL. START-UP INSTRUCTIONS,
CAMERA SETTINGS,
GPS RECEPTION, 4G/LTE
and much more.**



CAR MEDIA SYSTEMS



**VNC1061-DBJ-4G
VN1061-DBJ-4G**

SMART NAVICEIVER
MOBILE INTERNET READY
VISION ANDROID™ SERIES

IMPORTANT NOTES

This guide is an aid for the professional installation of the device.

Please note the following notes before installation:

- Always handle all parts of the device and the components of your vehicle with care.
- Under all circumstances observe the regulations of the vehicle manufacturer and do not make any changes to the vehicle which could impair driving safety.
- For safety reasons, disconnect the vehicle battery's ground connection before installation.
- Please always pay attention to the correct polarity of the connections.
- Please do not modify any harnesses or connections of the device or the vehicle as this may affect the warranty.
- Make sure that no cables are squashed or cause a short circuit.
- Do not lay cables in front of the airbags, e.g. in the dashboard or in a way that affects their function.

RECOMMENDED TOOLS

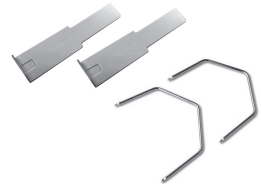


 T25

Torx T25 screwdriver / bit



Phillips screwdriver



Unlocking tools



Cable ties



Plastic mounting wedges



VNA-USB-TOOL

Plastic drill Ø19.5 mm

Compatibility:

Fiat Ducato III (Type 250, 2006+), Ducato IV (Type 290, 2015+)

Citroën Jumper II (Type 250, 2006+), Jumper III (Type 290, 2015+)

Peugeot Boxer II (Type 250, 2006+), Boxer III (Type 290, 2015+)

Opel Movano III (2021+)

Not compatible with blind spot assistant.

When replacing or removing original components such as the radio, depending on the equipment of your vehicle, error messages or functional restrictions may occur if appropriate measures are not followed when installing the ESX Naviceiver. For example, after removing the original radio, the on-board electronics causes an error message and the mileage indicator starts flashing. This may not occur until you have driven a few kilometers after installation.

Please note the following information before starting the installation:

TYPE 250 since 2006 / TYPE 290 since 2015

Factory equipment:	Radio preparation
Vehicle connectors:	ISO connector without CAN-Bus
Required accessories:	VNA-LFB-FD6 (included)
Steering wheel remote control*:	Must be learned in Naviceiver. See page 15 in the Owner's Manual.

TYPE 290 since 2015










Factory equipment:	Original Radio or Navigation System
Vehicle connectors:	CAN-Bus (52-PIN) USB- port (optional) AUX port (optional)
Required accessories:	VNA-CAN-DBJ (available separately)
Steering wheel remote control*:	Works immediately

TYPE 290 since 2015




Factory equipment:	Blue & Me e.g. Radio Delphi F250FL
Vehicle connectors:	CAN-Bus on ISO connector
Required accessories:	VNA-LFB-FD6 (included)
Steering wheel remote control*:	Must be learned in Naviceiver. See page 15 in the Owner's Manual.

* Depending on vehicle

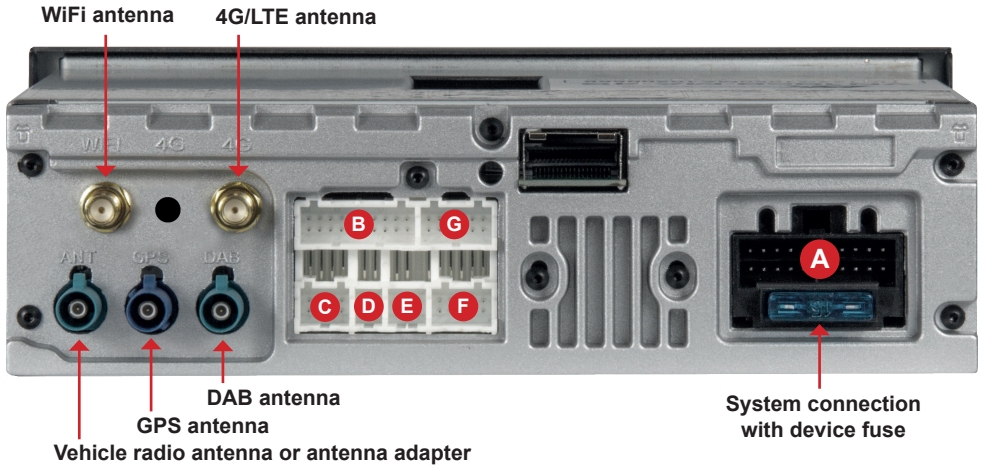
SCOPE OF DELIVERY

ITEM	FIGURE	QUANTITY
Main device		1
Monitor		1
MicroSD with Navigation Software (Only VNC models)		1
ISO System Cable Set for Fiat Ducato Platform <i>Please note this the information on page 3</i>		1
AV cable set 1 (20-pin connector)		1
USB ports (8-pin connector)		1
4G/LTE dongle (6-pin connector)		1
AV cable set 2 (10-pin connector)		1
WIFI antenna		1

SCOPE OF DELIVERY

ITEM	FIGURE	QUANTITY
<p>GPS antenna</p>		<p>1</p>
<p>DAB antenna</p>		<p>1</p>
<p>4G/LTE antenna</p>		<p>1</p>
<p>VNA-EB-DBJ-1DIN Installation set for Fiat Ducato platform</p>		<p>1</p>
<p>VNA-ER-1DIN Metal mounting cage with screws</p>		<p>1</p>
<p>VNA-LFB-FD6 Adapter for analoge steering wheel remote control</p>		<p>1</p>
<p>VNA-ANT9 Antenna adapter</p>		<p>1</p>

CONNECTION



A ISO system cable set

Cable brown (BRAKE):	Connection for handbrake signal (ground)
Cable pink (BACK):	Connection for reverse gear signal (+12V)
Cable orange/gray (KEY1):	Connection for steering wheel remote control (left)
Cable brown/black (KEY2):	Connection for steering wheel remote control (right)
Cable black (GND):	Ground for external devices such as cameras
Cable blue (AMP CONT):	Turn-on signal for external audio amplifier (+12V)

B AV cable set 1 (20-pin connector, white)

RCA white (FL-OUT):	Audio output front/left
RCA red (FR-OUT):	Audio output front/right
RCA white (RL-OUT):	Audio output rear/left
RCA red (RR-OUT):	Audio output rear/right
RCA turquoise (SUB-OUT):	Audio output Subwoofer
RCA yellow (CVBS-OUT1):	Video output for external monitor 1
RCA yellow (CVBS-OUT2):	Video output for external monitor 2
RCA white (AUX-L):	AUX audio input left
RCA rot (AUX-R):	AUX audio input right
RCA yellow (AUX-V):	AUX video input

⚠ NOTE:

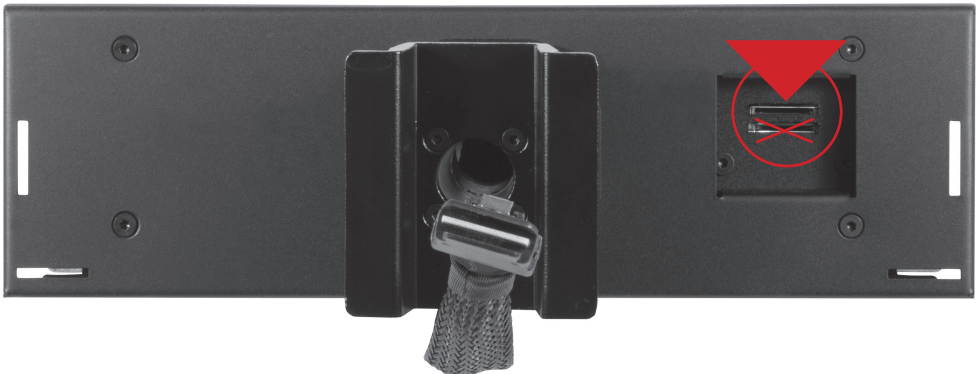
The handbrake signal must be connected to the enclosed cable. When the handbrake is applied, the signal must be at ground. According to legal regulations, the device may only play a DVD or video playback on the main screen when the handbrake is on. The connection cable must therefore not be permanently connected to ground. While driving, the screen is switched off to avoid accidents caused by carelessness.

CONNECTION

- C** **Input for the USB ports (8-pin connector, white)**
Please note the information from page 9 onwards.
- D** **Not in use**
- E** **Input for the 4G/LTE dongle (6-pin connector, white)**
Please note the information from page 14 onwards.
- F** **AV cable set 2 (10-pin connector, white)**
 - Cinch yellow (F-CAM):** Video input for front or additional camera
 - Cinch yellow (R-CAM):** Video input for rear view camera
 - Cinch yellow (S-CAM):** Not currently used
 - Socket black (MIC):** Connection for optional microphone
 - Cable red (C-POW):** + 12V power connection for cameras
- G** **Not in use**

NOTE: Find more information about cameras on page 13.

MICRO SD SLOT FOR NAVIGATION SOFTWARE



You can insert the microSD card of the navigation software here. Please ONLY use the top MicroSD card slot. The lower MicroSD card slot is only suitable for media.

GENERAL INSTALLATION INSTRUCTIONS

GPS antenna

The GPS antenna should be glued horizontally to the dashboard with the adhesive side down. Reception is not possible with a metal-coated pane. Choose a level spot with a clear view of the sky. The location should be about 50 - 70 cm away from the main unit, otherwise the GPS measurement accuracy will decrease. When installing the GPS antenna in the vehicle, the GPS accuracy is determined by the installation position and the body shape of the vehicle. Accuracy is usually lower when the GPS antenna is installed in the dashboard.

Remove the foil on the bottom of the GPS antenna



NOTE: When using the device for the first time and installing the navigation software for the first time, the search for GPS signals can take up to 30 minutes. After enough GPS satellites have been found to determine the position, they are permanently stored in the device and can therefore be found more quickly. If no GPS satellites are found afterwards or the GPS reception is poor, please note the following:

In order for the navigation software to function properly, sufficient GPS reception must be ensured on the Naviceiver. This is significantly influenced by the installation position of the GPS antenna in the vehicle. Therefore, make sure that the GPS antenna is properly installed in your vehicle to ensure the best possible reception.

Depending on the location or the topographical conditions in the reception area, GPS reception can vary and thus affect the functionality of the navigation software. GPS reception is also dependent on local satellite reception, which could be affected by current or global events.

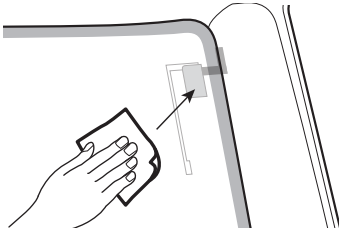
Under certain circumstances, GPS reception can also be impaired by electronic devices such as smartphones, inductive charging cradle or toll devices (e.g. Telepass, GO-Box etc.) in the vicinity of the GPS antenna. In this case, reposition the electronic devices.

GENERAL INSTALLATION INSTRUCTIONS

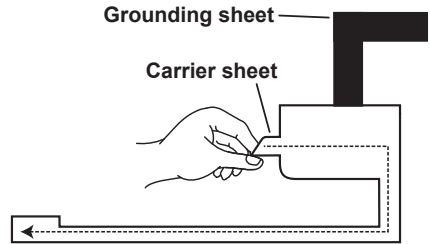
DAB antenna

In newer vehicles, the original vehicle antenna can usually be used for both analogue and digital radio reception. The included DAB window antenna should only be used if you cannot use a fender or roof antenna. If necessary, active antennas and active antenna splitters from specialist shops improve radio reception significantly.

Route the DAB antenna to the windshield on the passenger side A-pillar. You can lay the connecting cable under the A-pillar and then route it through the dashboard to the radio slot.



Clean the windscreen with a suitable cleaning cloth before sticking the antenna onto the screen.



Remove the backing sheet of the black amplifier unit and the film antenna and stick the antenna onto the glass. Glue the copper-colored metal face of the grounding blade to a bare metal part of the vehicle.

USB ports

Route the USB ports to the desired location, e.g. to the glove compartment. If you want to install the USB socket from cable set C in the dashboard, you will need a corresponding drill (19.5 mm diameter), e.g. **VNA-USB-TOOL**.

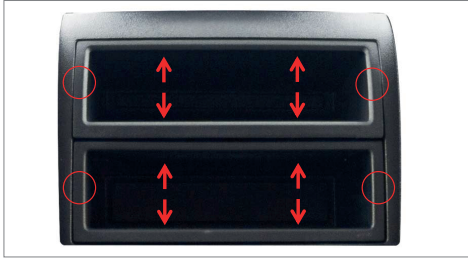


WiFi antenna

The WiFi antenna can be laid in the vehicle's radio slot. The WiFi signal can be received within a radius of about 5 meters.



INSTALLATION INSTRUCTIONS



Removing the original radio frame

The storage compartments can be pulled out with light pressure from the fingers on the sides (red circles). The locking lugs are located at the marked locations (red arrows). Then remove the clipped radio frame from the radio bay.



Retaining clips

First, the two included retaining clips must be attached to the top of the back of the ESX panel.



Storage compartment

Then push the storage compartment into the new ESX radio cover until it clicks into place. You can choose either the top or bottom position.



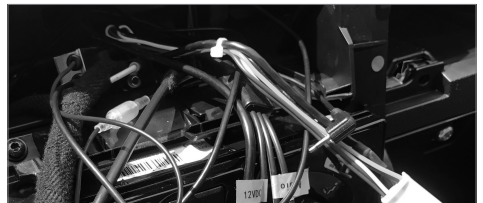
Metal mounting cage

Press the corresponding locking tabs on the included mounting cage outwards and then push it into the new ESX radio frame.



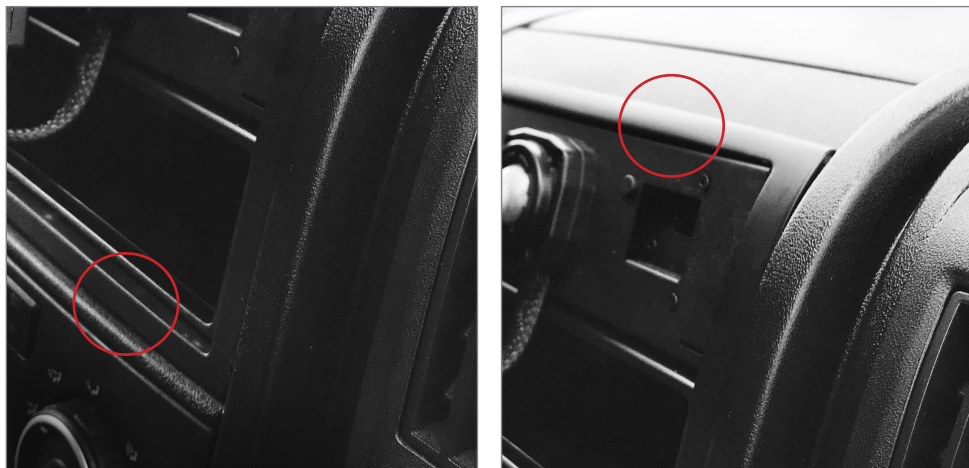
Main device

Then push the ESX main device into the radio frame and attach it on both sides with the included screws.



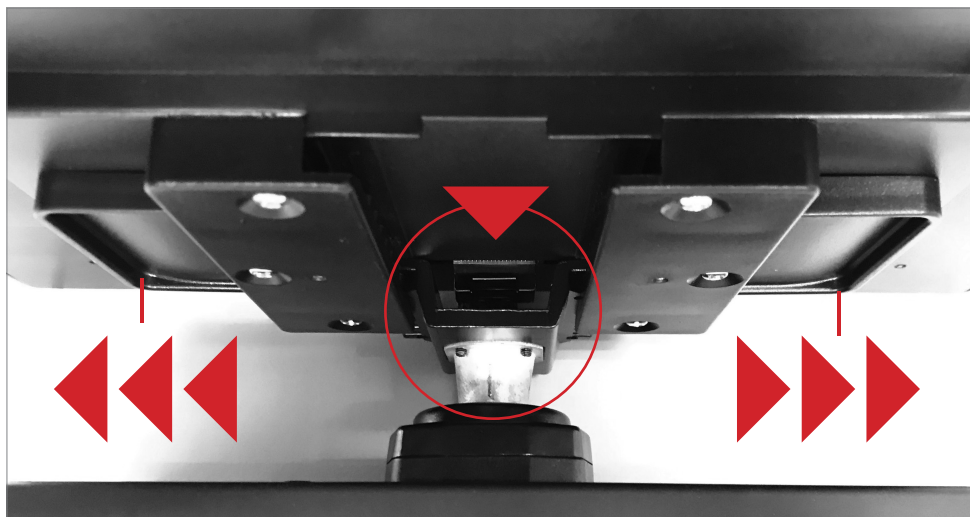
Connection

Next, install all accessories such as DAB, GPS or LTE/4G antennas in the vehicle. Lead all connection cables out through the radio slot and connect all necessary cables and connection plugs to the rear of the main device.



Final installation in the radio bay

After you have connected everything, insert the complete unit into the radio slot. First clip in the two lower latches and then the two upper latches. Make sure that all connections are locked securely.



Assembly of the monitor

Slide the monitor onto the holder of the main unit and unlock the two brackets on the side by sliding them outwards. After installation, you can also change the position of the monitor by unlocking the two brackets.



Connecting the monitor

Connect the monitor's connector to the main unit.

IMPORTANT:

If the monitor does not work after connecting it to the main unit, the connection plug of the connecting cable may not be properly locked.

Then pull the connection plug on the monitor away from the connection on the cable until it clicks into place without pressing the release button.

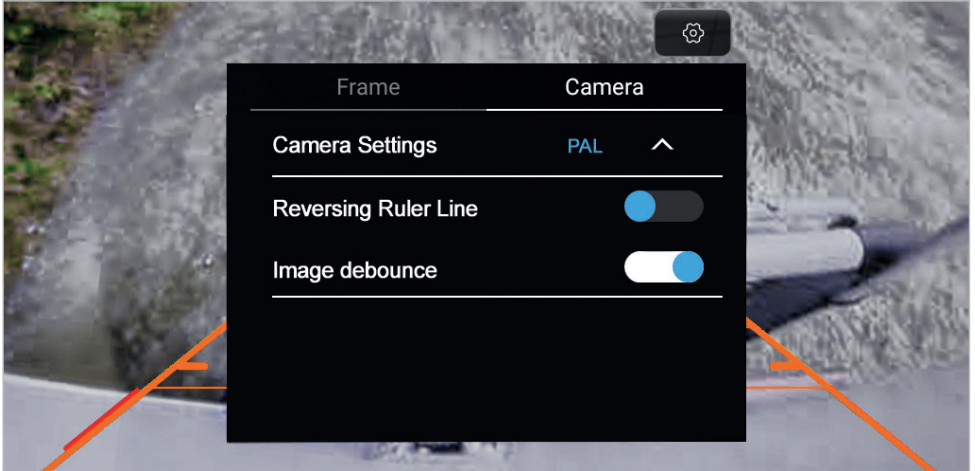


Functional test

Finally, carry out a functional test.

CAMMERA SETTINGS

When you put the car in reverse gear, the rear view camera connected to **“R-CAM”** can be seen with guide lines. To change the settings, tap the screen and then tap the **gear icon** that appears.

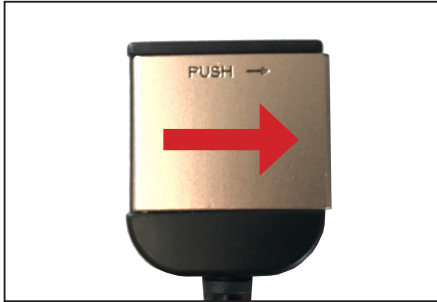


If the view of your connected camera is displayed incorrectly or not at all, various settings can be made under “Camera” to adapt the camera to the device. If the camera view does not appear when you engage reverse gear, enable **“Image debounce”**.

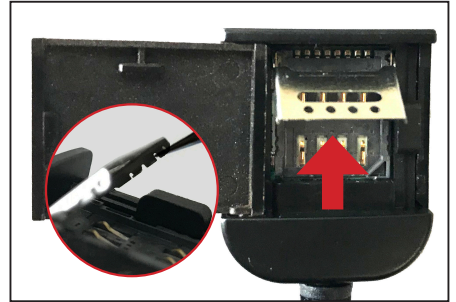
You can make further settings in the app menu under **“Settings”** and then under **“Back”**.

SETUP THE 4G/LTE INTERNET CONNECTION

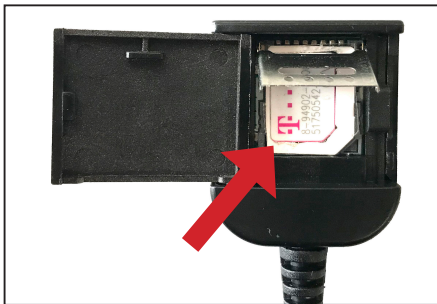
1. First lay the two 4G/LTE antennas inside the dashboard towards the windshield, one antenna for the left and one for the right.
2. Ideally, you should stick the antennas to the windshield to ensure optimal reception.
3. Then insert your SIM card in the 4G/LTE dongle:



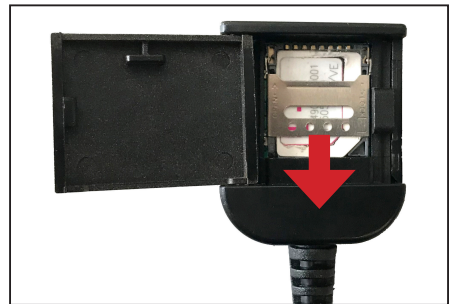
Open the dongle by pushing the flap to the right.



Now open the metal flap carefully with a suitable tool by pushing the flap up.



Then insert your SIM card with the contacts facing down.



Close and lock the metal flap carefully by pushing the flap down.

Compatible SIM cards:



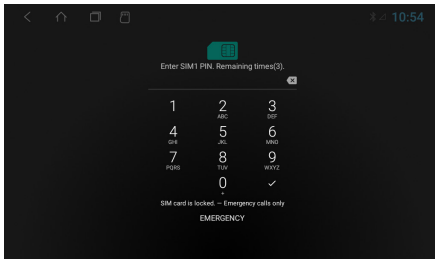
Micro SIM



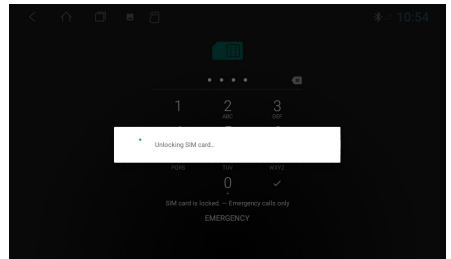
Nano SIM with adapter for Micro SIM

SETUP THE 4G/LTE INTERNET CONNECTION

4. Then turn on the device to test the 4G/LTE connection.



After the device has started, enter your 4-digit PIN code of the SIM card here. Confirm the entry with the tick.



After successful entry, the SIM card is unlocked. If the device is successfully connected to the mobile Internet, the „4G“ symbol appears in the status bar at the top right.

5. After a successful test, install the 4G/LTE dongle in the radio slot or dashboard.
6. If the device is turned off, you have to enter the PIN code of the SIM card again after each restart, just like with a smartphone. The SIM card's PIN query can be deactivated in standard smartphones. To do this, insert the SIM card in a smartphone and deactivate it accordingly. The steps involved vary depending on the smartphone.



CAR MEDIA SYSTEMS



ESX Car Media Systems · Audio Design GmbH
Am Breilingsweg 3 · D-76709 Kronau/Germany
Tel. +49 7253 - 9465-0 · Fax +49 7253 - 946510
www.esxnavi.de - www.audiodesign.de

© Alle Rechte vorbehalten. Technische Änderungen und Fehler vorbehalten.