

V1.1

INSTALLATION  
GUIDE



CAR MEDIA SYSTEMS



VN715-MB-A1-DAB

**INFOTAINMENT**  
**TOUCHSCREEN NAVICEIVER**  
VISION SERIES FOR ANDROID™

## IMPORTANT NOTES

---

**This guide is an aid for the professional installation of the device.**

**Please note the following notes before installation:**

- Always handle all parts of the device and the components of your vehicle with care.
- Under all circumstances observe the regulations of the vehicle manufacturer and do not make any changes to the vehicle which could impair driving safety.
- For safety reasons, disconnect the vehicle battery's ground connection before installation.
- Please always pay attention to the correct polarity of the connections.
- Please do not modify any harnesses or connections of the device or the vehicle as this may affect the warranty.
- Make sure that no cables are squashed or cause a short circuit.
- Do not lay cables in front of the airbags, e.g. in the dashboard or in a way that affects their function.

## RECOMMENDED TOOLS

---



 T25

**Torx T25  
screwdriver or bit**



**Plastic mounting wedges**



**Cable ties**

## COMPATIBILITY

---

### **Mercedes-Benz\***

**A-Class W169 (2004-2012)**

**B-Class T245 (2005-2011)**

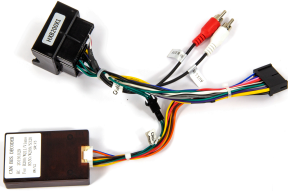
**Sprinter W906 (2006-2018)**

**Viano/Vito W/V639 (2003-2014)**

**Viano/Vito W 447 (since 2014)**




\* Only for vehicles with CAN bus on the radio connection. For vehicles with ISO preparation and without CAN bus, the connection cable **VNA-POW-i15** must also be ordered.

# SCOPE OF DELIVERY

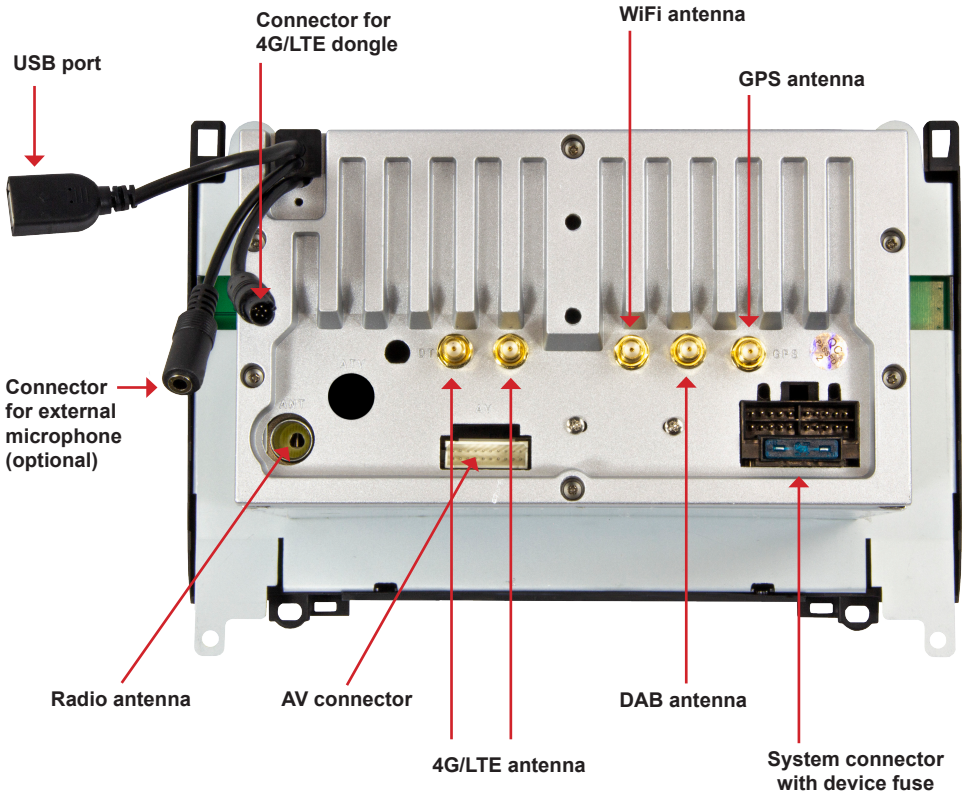
ITEM	FIGURE	QUANTITY
Main device		1
System connector QUADLOCK Standard		1
System connector QUADLOCK with CAN-Bus decoder		1
CAN-Bus connection cable		1
Antenna adapter Fakra on ISO		1
AV connector with all audio and video connections and additional USB port		1



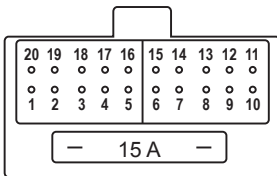
## SCOPE OF DELIVERY

ITEM	FIGURE	QUANTITY
GPS antenna	 A black square GPS antenna with a black cable and a yellow SMA connector.	1
DAB antenna	 A white rectangular DAB antenna with a black cable and a yellow SMA connector.	1
4G/LTE antennas	 Two black rectangular 4G/LTE antennas with black cables and yellow SMA connectors.	2
4G/LTE dongle	 A black 4G/LTE dongle with a gold USB connector and a black cable.	1
WIFI antenna	 A black WIFI antenna with a yellow SMA connector.	1

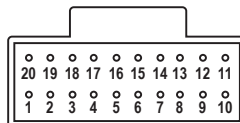
# WIRING DIAGRAM



**System connector with device fuse**



**AV connector**



- 1 BATTERY (+12V)
- 2 REAR RIGHT OUT (+)
- 3 FRONT RIGHT OUT (+)
- 4 REAR LEFT OUT (-)
- 5 FRONT LEFT OUT (-)
- 6 ACC +
- 7 REVERSE CONTROL
- 8 ANT/AMP CONTROL
- 9 KEY2 (SPARE BIT)
- 10 CAN-RX

- 11 LIGHT CONTROL
- 12 STEERING GND
- 13 KEY1
- 14 CAN -TX
- 15 BRAKE CONTROL
- 16 FRONT LEFT OUT (+)
- 17 REAR LEFT OUT (+)
- 18 FRONT RIGHT OUT (-)
- 18 REAR RIGHT OUT (-)
- 20 GND (BATTERY -)

- 1 VIDEO OUT 2
- 2 GND
- 3 VIDEO OUT 1
- 4 CAMERA IN
- 5 GND
- 6 AUX VIDEO IN
- 7 AMPLIFIER CONTROL
- 8 REAR RIGHT OUT
- 9 REAR LEFT OUT
- 10 FRONT RIGHT OUT

- 11 FRONT LEFT OUT
- 12 SUBWOOFER OUT
- 13 GND
- 14 AUX IN-LEFT
- 15 GND
- 16 AUX IN-RIGHT
- 17 GND
- 18 USB-DP
- 18 USB-DN
- 20 USB +5V

## MICRO SD SLOT FOR NAVIGATION SOFTWARE

---



Here you can insert the MicroSD card of the navigation software. For the device to have access, you may need to assign the access path in the Apps menu under “Settings”.

## RESET BUTTON

---

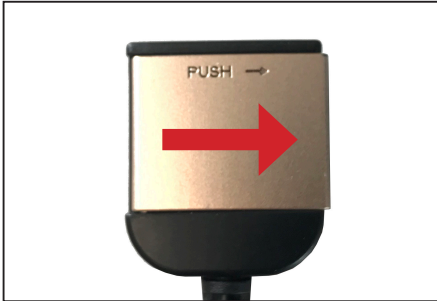


If the device stops responding to input, the system is overloaded or crashed. Then reboot the system by pressing the reset button (RST) on the front panel. Use a suitable object, such as a paper clip or a ballpoint pen. After pressing the reset button, the system restarts without losing your previous settings.

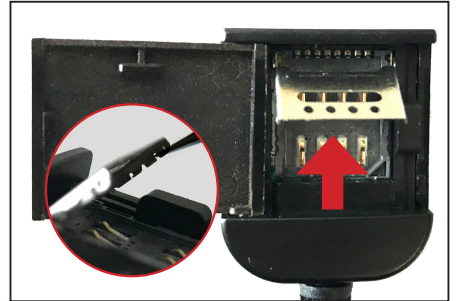
## SETUP THE 4G/LTE INTERNET CONNECTION

---

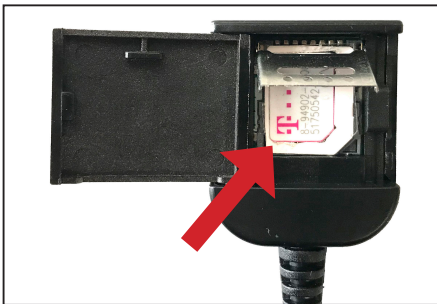
1. First lay the two 4G/LTE antennas inside the dashboard towards the windshield, one antenna for the left and one for the right.
2. Ideally, you should stick the antennas to the windshield to ensure optimal reception.
3. Then insert your SIM card in the 4G/LTE dongle:



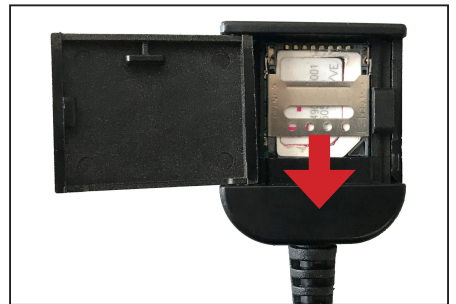
Open the dongle by pushing the flap to the right.



Now open the metal flap carefully with a suitable tool by pushing the flap up.



Then insert your SIM card with the contacts facing down.



Close and lock the metal flap carefully by pushing the flap down.

### Compatible SIM cards:



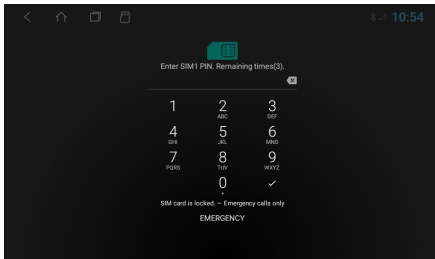
Micro SIM



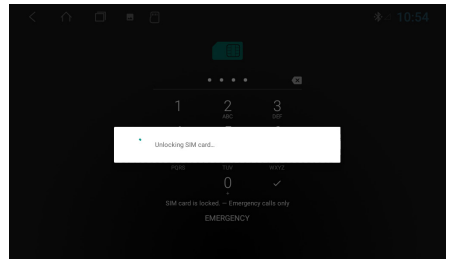
Nano SIM with adapter for Micro SIM

## SETUP THE 4G/LTE INTERNET CONNECTION

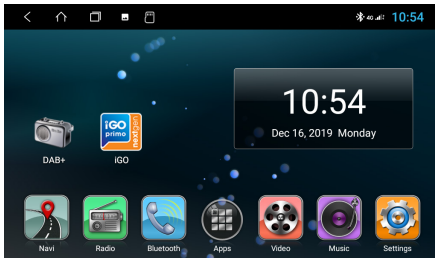
### 4. Then turn on the device to test the 4G/LTE connection.



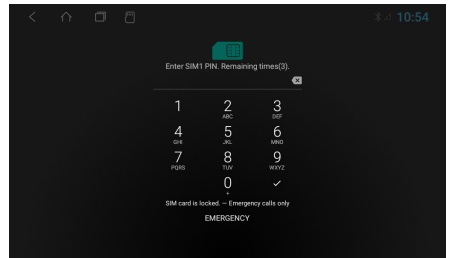
After the device has started, enter your 4-digit PIN code of the SIM card here. Confirm the entry with the tick.



After successful entry, the SIM card is unlocked.



If the device is successfully connected to the mobile Internet, the „4G“ symbol appears in the status bar at the top right.



If the device is turned off, you have to enter the PIN code of the SIM card again after each restart, just like with a smartphone.

### 5. After a successful test, install the 4G/LTE dongle in the radio slot or dashboard.

## INSTALLATION TIPS

---



**Shipping locks:**  
Remove both shipping locks on the top of the device before starting installation.



**GPS antenna:**  
The GPS antenna must be mounted horizontally, if possible on the front of the dashboard (ensure a clear view to the sky). No reception is possible with a metal-coated windscreen.



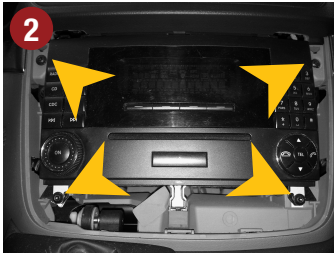
**DAB + antenna:**  
Glue the DAB+ antenna to the windscreen on the right or left and lay the connection cable through the dashboard to the radio slot.



**USB connection:**  
Lay the cable to the desired installation location, e.g. in the glove compartment. If necessary, openings have to be drilled for this.



Loosen the lower panel with a mounting wedge on both sides.



Use a Phillips screwdriver to remove the four retaining screws from the radio. Then carefully pull the radio out of the slot.



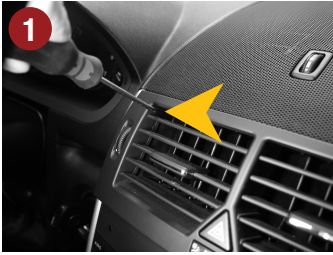
Then remove all cable plugs and the antenna plug on the radio. Now lay the connection cables of the ESX device (see p. 6) in the vehicle to the desired installation location and connect them accordingly at the new ESX device. Also connect the vehicle-specific cable connector and the antenna connector.



Check the function of the device before assembly. It may take up to 5 minutes to receive a GPS signal outdoors.

After successfully checking the functions, carry out the assembly (1-2) in reverse order.





Carefully unlatch the fan unit above the radio on both sides. You will find the brackets in the top first slot on each side. Use a small slotted screwdriver to loosen the bracket.



Then loosen the fan unit with assembly wedges. Be careful not to disconnect the hazard switch from its cable.



Now remove both upper retaining screws on each side using the Torx T25 screwdriver.

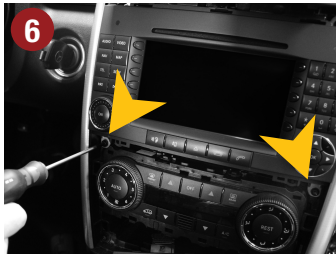


Then loosen the lower radio cover with mounting wedges.





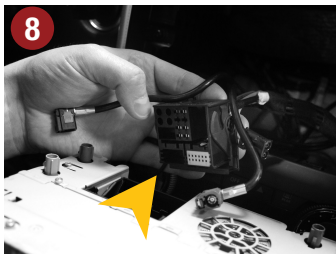
Now carefully remove the lower radio cover.



Now remove both lower retaining screws on each side using the Torx T25 screwdriver.



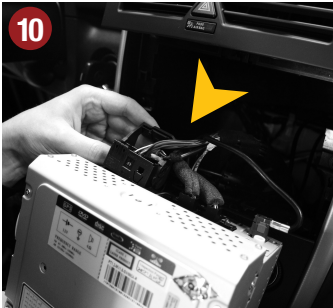
Then carefully pull the radio out of the slot.



Then remove all cable plugs and the antenna plugs on the radio.



Now lay the connection cables of the ESX device (see p. 6) in the vehicle to the desired installation location.



Now connect all connection cables and plugs at the ESX device (see p. 6). Then also connect the vehicle-specific cable connector and the antenna connector. Then slide the ESX device into the slot of the dashboard.



Check the function of the device before assembly. It may take up to 5 minutes to receive a GPS signal outdoors.

After successfully checking the functions, carry out the assembly (1-4) in reverse order.





CAR MEDIA SYSTEMS



ESX Car Media Systems · Audio Design GmbH  
Am Breilingsweg 3 · D-76709 Kronau/Germany  
Tel. +49 7253 - 9465-0 · Fax +49 7253 - 946510  
[www.esxnavi.de](http://www.esxnavi.de) - [www.audiodesign.de](http://www.audiodesign.de)

© All rights reserved. Technical changes, errors and mistakes reserved.